



ADOBE® ACROBAT® CONNECT® PRO

PowerLink for Blackboard Vista and Campus Edition Install Guide

Introduction	1
Requirements.....	2
Authentication in Hosted and Licensed Environments.....	2
Meeting Permissions.....	2
Installation.....	3
Configuring the Shared Secret (Licensed Version Only).....	3
Modifying the Login Policy.....	3
Deploying the Resources on a Web Server (Hosted Version Only).....	4
Deploying the PowerLink.....	5
Configuring the PowerLink.....	5
Creating the Proxy Tool.....	7
Adding Connect Pro to Course Sections.....	10

Introduction

The Adobe Acrobat Connect Pro PowerLink lets instructors, teaching assistants, and designers add Adobe Acrobat Connect Pro meetings to their course sections from within Blackboard Vista/Campus Edition. Once the Connect Pro proxy tool is added to a course section, users can instantly view and access their Connect Pro meetings without having to re-enter their credentials.

This document explains how to install and configure the Connect Pro PowerLink.

Requirements

- Adobe Acrobat Connect Pro 7 (licensed or hosted)
- Blackboard Vista 4.1.1 or later / Blackboard Campus Edition 6.1.1 or later
- Server administrator account access for your Blackboard LMS
- Connect Pro administrator account access.

Authentication in Hosted and Licensed Environments

If you are using the licensed version of Connect Pro, the Connect Pro PowerLink will use Connect Pro's trusted authentication feature to automatically log on Blackboard users to Connect Pro. Trusted authentication allows secure logon to Connect Pro without passwords. It requires that you configure a shared secret on both the Connect Pro server and the Blackboard Vista/Campus Edition server.

If you are using the hosted version of Connect Pro, trusted authentication is not supported. Instead, the shared secret that you configure in Blackboard Vista/Campus Edition is used to generate a password for each user, and this password is used to authenticate the user when logging on to Connect Pro.

Important: For the hosted version, if you change the shared secret setting in Blackboard Vista/Campus Edition, existing Connect Pro PowerLink users will no longer be able to log on to Connect Pro. To enable them to log on again, the Connect Pro administrator must delete their accounts in Connect Pro. New Connect Pro accounts will be created for them automatically, either when they access the Connect Pro PowerLink or when another user uses the Connect Pro PowerLink to add them to a meeting. Keep in mind that if a user's Connect Pro account is deleted, all previous meeting invitations are deleted as well. Note that this does not affect Connect Pro users created outside of the Connect Pro PowerLink.

Meeting Permissions

When a new user accesses the Connect Pro PowerLink, a Connect Pro account is created automatically. New users can attend meetings, but they do not have have permission to create, delete, or modify meetings. To have those permissions, a Connect Pro administrator must assign the user to an appropriate group from within Connect Pro. For information on assigning users to groups, see the Connect Pro documentation.

Installation

The basic installation steps are:

- Configure the shared secret (licensed version only)
- Modify the password policy
- Deploy the resources on a web server (hosted version only)
- Deploy the PowerLink
- Configure the PowerLink
- Create the proxy tool.

Configuring the Shared Secret (Licensed Version Only)

If you are using the licensed version of Connect Pro, you need to configure the shared secret on your Adobe Acrobat Connect Server. This is required to enable single sign-on between Blackboard and Connect Pro. Later on, when you configure the PowerLink in Blackboard Vista/Campus Edition, you will need to assign the same value to the PowerLink's shared secret setting.

In to the directory where Connect Pro 7 is installed, open the `appserv\conf\config.ini` file in a text editor. Add a setting named `SHARED_SECRET_TRUSTED_LOGIN` and set the value to the shared secret you want to use.

For example:

```
SHARED_SECRET_TRUSTED_LOGIN=s0MeS3cr3T
```

Restart the Connect Pro service.

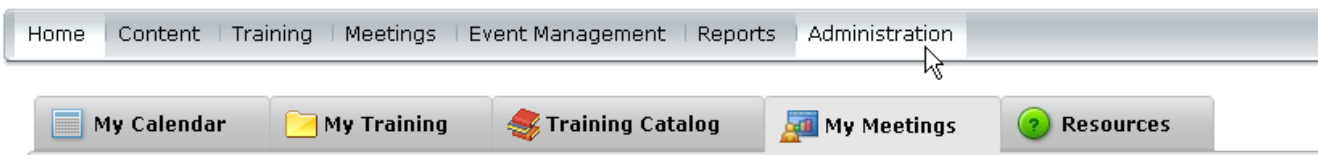
Note: The value of the `SHARED_SECRET_TRUSTED_LOGIN` setting is encrypted automatically when the service is restarted.

Modifying the Login Policy

By default, Connect Pro uses the person's email address as the login. The PowerLink needs to use the Blackboard person ID as the login, so you need to modify Connect Pro's login policy.

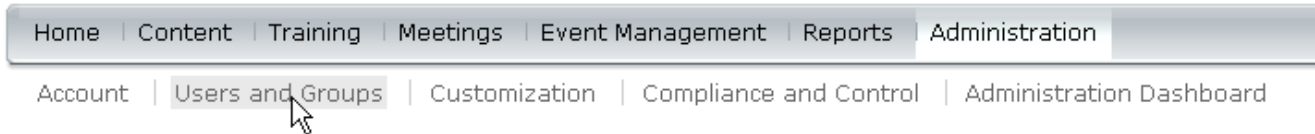
1. Go to the Connect Pro Central Login page and log on as a Connect Pro administrator.
2. Click *Administration*.

ADOBE ACROBAT CONNECT PRO



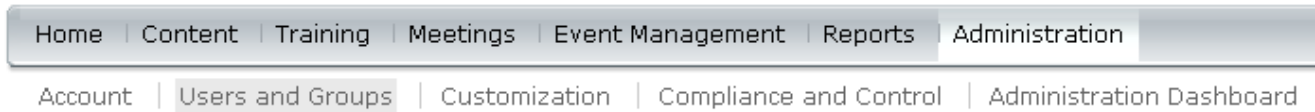
3. Click *Users and Groups*.

ADOBE ACROBAT CONNECT PRO



4. Click *Edit Login and Password Policies*.

ADOBE ACROBAT CONNECT PRO



[Users and Groups](#) | [Customize User Profile](#) | **[Edit Login and Password Policies](#)** | [Import](#) | [Cost Centers](#)

5. Set *Use e-mail address as the login* to *No*.

Login Policy

Specify whether or not you wish to use the user's e-mail address as their default login, or another ID (such as network login or employee ID). Note: login credentials must be unique across all users.

Use e-mail address as the login: Yes No

Password Policies

Specify the following password management policies according to your existing best-practices.

Passwords expire after: days
(If blank, passwords do not expire.)

6. Make sure that the *Passwords expire after* box is empty.

7. Click **Save**.

Deploying the Resources on a Web Server (Hosted Version Only)

If you are using the hosted version of Connect Pro, you need to deploy some images and stylesheet files on a web server so that they can be accessed by the PowerLink over HTTP. The `resources` folder in the PowerLink distribution package contains the files that you need to deploy on a web server. Copy the contents of the `resources` folder to a directory under your root web directory.

Note: When you configure the PowerLink, you will need to specify the base URL of the web server up to the directory that contains the resources. For example, assume that the root web directory is `/etc/httpd/www` and the web server base URL is `http://www.example.org`. If you copy the resources to `/etc/httpd/www/cp_resources`, the base resource URL that you configure in Blackboard would be `http://www.example.org/cp_resources`.

Deploying the PowerLink

Log on to the server where Blackboard Vista or Campus Edition is installed. Go to the `deployablecomponents` directory and create a subdirectory named `adobe`. Copy the following jar files from the PowerLink distribution package to the `adobe` directory:

- `adobe-connectpro-powerlink.jar`
- `authmoduledata_ce_1.4.jar`
- `commons-codec-1.3.jar`
- `commons-collections-3.2.1.jar`
- `jaxen-core.jar`
- `jaxen-jdom.jar`
- `jdom.jar`
- `saxpath.jar`
- `velocity-1.5.jar`

If your Blackboard Vista or Campus Edition instance is currently running, restart it now.

Configuring the PowerLink

1. Log on to Blackboard Vista or Campus Edition as the server administrator.



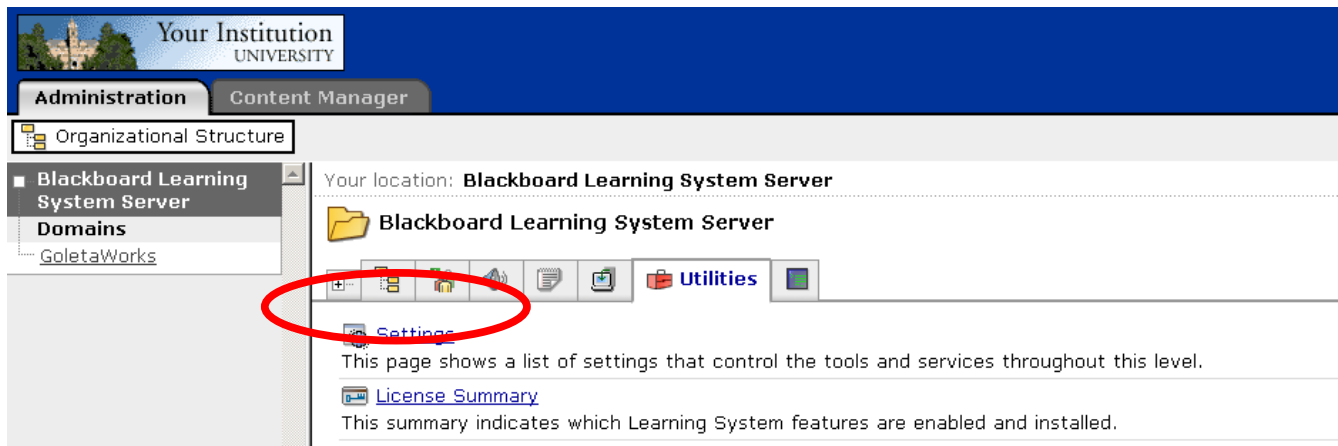
Log In

User name:

Password:

[Forgot your login information?](#)

2. Click the *Utilities* tab. Then click *Settings*.




3. In the *System Integration* column, click *Adobe Connect Pro Blackboard Vista Integration Module*.

System Integration

[Adobe Connect Pro Blackboard Vista Integration Module](#)

4. Set *Enable* to true.

 **Settings Adobe Connect Pro Blackboard Vista Integration Module System**

To apply the value to child learning contexts, select Override Setting at Child Contexts. To pre-Setting.

Title	Value
Enable	<input checked="" type="radio"/> true / <input type="radio"/> false

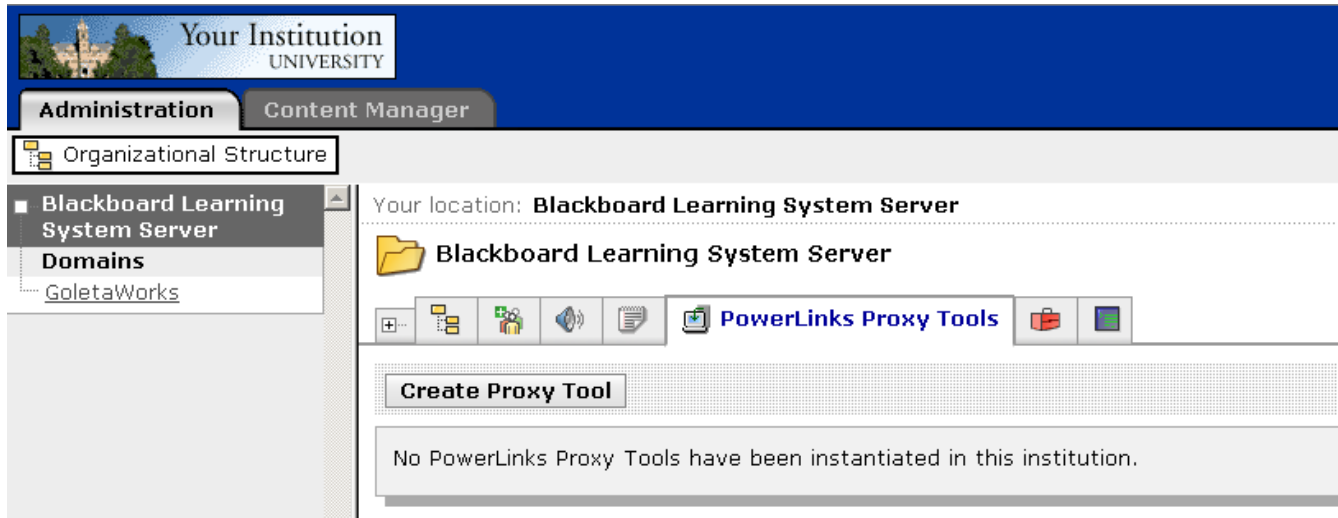
5. Configure the following settings:

<i>Connect Pro URL</i>	The URL of your Adobe Acrobat Connect Pro instance.
<i>Connect Pro administrator user name</i>	The user name of your Connect Pro administrator. This is required to create user accounts.
<i>Connect Pro administrator password</i>	The password of the Connect Pro administrator.
<i>Shared secret</i>	<p>The shared secret.</p> <ul style="list-style-type: none"> ●For the licensed version of Connect Pro, set this to the value that was configured for the SHARED_SECRET_TRUSTED_LOGIN setting in the appserv\conf\config.ini file of the Connect Pro installation. ●For the hosted version of Connect Pro,
<i>Base URL for resources</i>	<p>The URL of the directory on the web server that contains the resource files.</p> <ul style="list-style-type: none"> ●For the licensed version of Connect Pro, set this to the Connect Pro URL. ●For the hosted version of Connect Pro, set this to the URL of the directory on the web server that contains the resources. For example, assume that the root web directory is /etc/httpd/www and the web server base URL is http://www.example.org. If you copy the resources to /etc/httpd/www/cp_resources, the base resource URL that you configure in Blackboard would be http://www.example.org/cp_resources.
<i>Jar file location</i>	The directory (relative to the root of your Blackboard Vista/Campus Edition installation) that contains the Connect Pro PowerLink jar and its supporting jars.

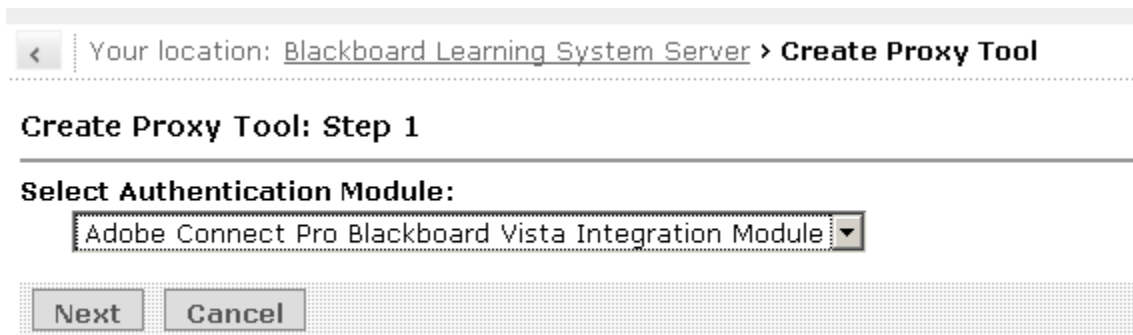
6. Lock all settings except the *Enable* setting. Then click **Save Values**.

Creating the Proxy Tool

1. In the *PowerLinks Proxy Tools* tab, click **Create Proxy Tool**.



2. Select the Connect Pro PowerLink in the list and click **Next**.



3. Enter a name, version number, and description for the proxy tool. Then click **Save**.

Note: All other settings are locked, so you do not need to set them. If they are not locked, repeat the steps in the *Configuring the PowerLink* section.

4. Click the *Utilities* tab. Then click *Settings*.

5. In the *Tools* column, click the name of the proxy tool you created.

Tools

[Adobe Connect Pro Meeting](#)

6. Unlock the *Enable Tool* setting. Then click **Save Values**.

Title	Value	Options
Enable Tool	<input type="radio"/> true / <input type="radio"/> false	This setting has been locked <input checked="" type="checkbox"/> Unlock this setting

7. Set *Enable Tool* to true. Then click **Save Values**.

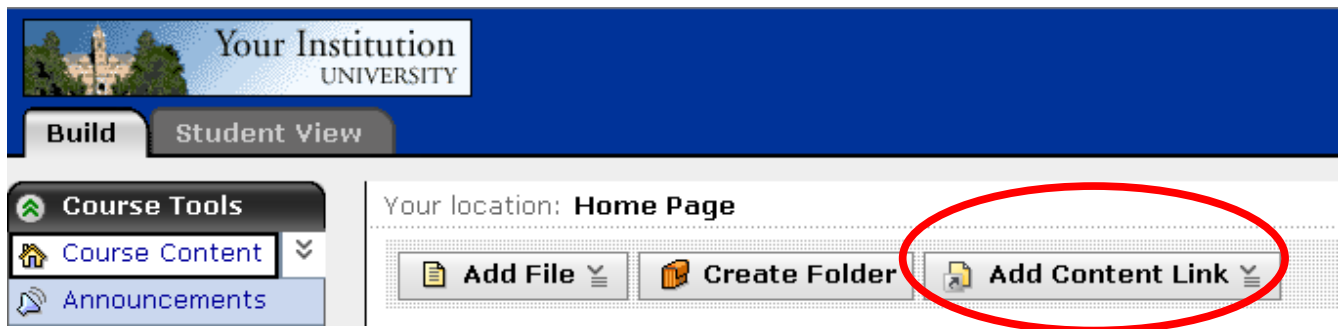
Title	Value
Enable Tool	<input checked="" type="radio"/> true / <input type="radio"/> false

The proxy tool is now enabled and designers can add it to course sections.

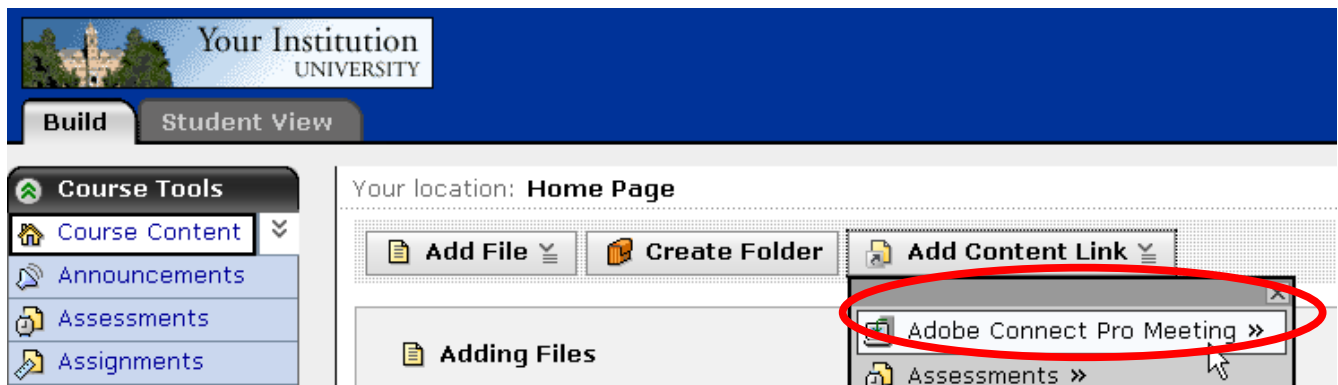
Adding Connect Pro to Course Sections

This section shows how designers can add the Connect Pro PowerLink to their course sections.

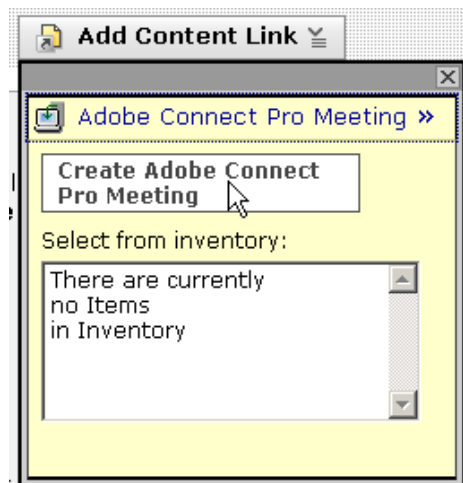
1. Log on to Blackboard Vista or Campus Edition as a section designer.
2. Go to the section where you want to add Connect Pro.
3. Click **Add Content Link**.



4. Click the name of the proxy tool.



5. Click the link to create the proxy tool instance in the section.



6. Enter a title for the proxy tool instance link. Then click **Save**.

Create Adobe Connect Pro Meeting

* Title:

Settings:

Title	Value
*Operational Timeout	<input type="text" value="10"/>
*Open In New Window	<input type="radio"/> true / <input checked="" type="radio"/> false
*Connect Pro URL	<input type="text" value="http://omnibus"/>
*Connect Pro administrator user name	<input type="text" value="paul@goletaworks.com"/>
*Connect Pro administrator password	<input type="password" value="....."/>
Shared secret	<input type="password" value="....."/>
*Base URL for resources (images, CSS stylesheets)	<input type="text" value="http://omnibus"/>
*Jar file location	<input type="text" value="./deployablecomponents/adobe"/>

* Required field

Connect Pro is now available for members of this section.

Important: When a user accesses the PowerLink for the first time, a Connect Pro account is created automatically. By default, the account will not have permission to create, delete, or modify meetings. The Connect Pro administrator must assign the user to a group from within Connect Pro. For information on assigning users to groups, see the Connect Pro documentation.